



## V Neck Slim Evening Dress Solid Color Tie One Shoulder Hollow Black Sexy Evening Dress

Our Product Introduction

for more products please visit us on [stylishladydress.com](http://stylishladydress.com)

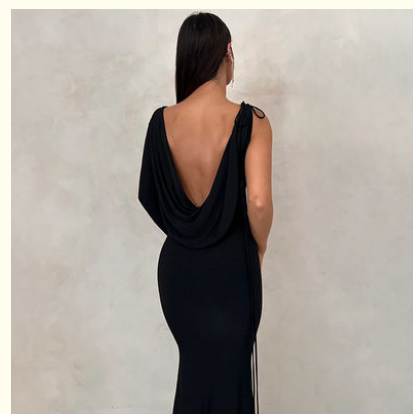
### Basic Information

- Place of Origin: china
- Model Number: 9628
- Minimum Order Quantity: expand on
- Price: expand on



### Product Specification

- Closure Type: Pullover
- Style: Slim
- Gender: Female
- Season: Autumn/Winter
- Size: S, M, L
- Color: Customizable
- Sleeve Length: Long Sleeve, sleeveless
- Neckline: V-neck
- Craft: Lacing
- Fashion Element: Backless
- Highlight: V Neck Slim Evening Dress Solid Color, Slim Evening Dress One Shoulder, Tie Hollow Black Sexy Evening Dress



### More Images



## Product Description

Slim V-neck evening dress, solid color tie with one shoulder hollow sexy temperament evening dress

### Technical Parameters:

Name	Slim Evening Dress
Style	Slim
Sleeve Length	Long Sleeve,sleeveless
Occasion	Evening
Color	Customizable
Season	Autumn/Winter
Embellishment	Embroidery
Material	Cotton,polyester Fiber
Pattern Type	Solid
Neckline	V-neck

### Product Description:

This slim-fit evening gown is perfect for ladies to make a statement on the latest fashion trends. This stunning piece is crafted from high quality cotton and polyester fibers and features intricate craftsmanship and delicate lacing details. The waist line is a high-waisted design that gives you a flattering silhouette. This solid pattern pair will make you stand out in any situation. It also has V-neck and backless details that add a modern touch to a slim-fit evening gown. Get ready to show off your elegant style with this slim-fit evening gown!



### Features:

**Product Name:** Slim Evening Dress

**Occasion:** Evening

**Closure Type:** Pullover

**Pattern Type:** Solid

**Length:** Knee-length  
**Embellishment:** Embroidery  
**Fashion Styles:** Female Fashion Styles  
**Trends:** Ladies Dress  
**Dress Type:** Fashion Dress, Evening Dress

## Applications:

Modern Slim Evening Dress for Women Party Wear

This slim evening dress is made from **Cotton** and **Polyester Fiber**, with **Embroidery** embellishment. It is of Chinese origin and comes with **long sleeve** and **sleeveless** options for all sizes. The stylish traditional dress is designed for ladies to make an eye-catching and graceful look for an evening occasion.

It features a slim fit silhouette with modern female fashion styles. Whether you are attending a wedding, prom or any other event, this dress will make you look stunning. It is available in **S, M, L** sizes.

## Customization:

Customize Your Slim Evening Dress

Get the perfect slim-fit evening dress for your special event! Our women's clothing is made of the finest quality fabrics and designed with the latest popular women's fashion. Choose from sizes S, M, L and customize to your specifications. Origin is China, closed type is pullover. High waist line, very suitable for autumn and winter occasions. Look flawless in this slim-fit evening gown!

## FAQ:

Q: What is the place of origin of this Slim Evening Dress?

A: The place of origin of this Slim Evening Dress is China.

Q: What fabric is this Slim Evening Dress made of?

A: This Slim Evening Dress is made of silk.

Q: What size is this Slim Evening Dress available in?

A: This Slim Evening Dress is available in a range of sizes.

Q: What color options are available for this Slim Evening Dress?

A: This Slim Evening Dress is available in black, white, navy blue, light blue and pink.

Q: Is it easy to care for this Slim Evening Dress?

A: Yes, this Slim Evening Dress is easy to care for and can be machine washed.

**VINAS DRESS** Guangzhou Vinas clothing technology Co., LTD



15827133024



leopeng15827133024@gmail.com



styishladydress.com

Building F, No. 3 Nanpu Nangui Road, Luopu Street, Panyu District, Guangzhou City